

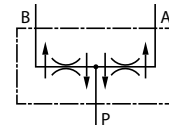
VÁLVULAS HIDRÁULICAS

Hydraulic valves
Valves hydrauliques
Valvole idrauliche



Divisores de caudal al 50% - tipo FPDF

Flow dividers 50% spring operated
Diviseurs de débit à 50% à ressort
Divisori di flusso al 50% - tipo FPDF



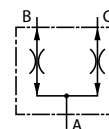
Referencia Part n°	ROSCA THREAD	CAUDAL (l/min) FLOW (l/min)	PRESIÓN MAX. (bar) MAX. PRESSURE (bar)	€
FPFD S10 CB 3/8 3/8 SA	3/8" BSP	1-5	350	232,04
FPFD S10 CB 3/8 3/8 SE	3/8" BSP	5-10	350	232,04
FPFD S10 CB 3/8 3/8 SI	3/8" BSP	10-20	350	232,04
FPFD S10 CB 1/2-3/8 SM	1/2" BSP	20-40	350	232,04
FPFD S10 CB 1/2-3/8 SQ	1/2" BSP	40-50	350	232,04
FPFD S12 CB 1/2 1/2 SA	1/2" BSP	50-75	350	227,44
FPFD S12 CB 3/4 1/2 SE	3/4" BSP	75-100	350	280,88
FPFD S16 CB 3/4-3/4 SA	3/4" BSP	80-115	350	371,64
FPFD S16 CB 1 3/4 SE	1" BSP	115-150	350	371,64

La primera rosca corresponde con P, y la segunda con A y B. / The first thread is for P, and the second for A and B. / Le premier filetage concerne P, et le second A et B. / Il primo filetto corrisponde alla P, e il secondo con A e B



Divisores de caudal al 50% - tipo DTP

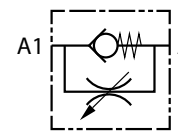
Flow dividers 50% spring operated
Diviseurs de débit à 50% à ressort
Divisori di flusso al 50% - tipo DTP



Referencia Part n°	ROSCA THREAD	CAUDAL MIN. (l/min) MIN. FLOW (l/min)	CAUDAL MÁX. (l/min) MAX. FLOW (l/min)	PRESIÓN MAX. (bar) MAX. PRESSURE (bar)	GRADO DE FILTRACIÓN (µm) FILTRATION DEGREE (µm)	€
DTP-6-35-G3/8	3/8" BSP	12	35	350	8 µm	176,88
DTP-6-50-G3/8	3/8" BSP	16	50	350	8 µm	175,64

Estrangulador unidireccional (regulable)

Adjustable unidirectional barrel valve
Étrangleur unidirectionnel réglable
Strozziatore unidirezionale (regolabile)



Referencia Part n°	ROSCA THREAD	CAUDAL MÁX. (l/min) MAX. FLOW (l/min)	PRESIÓN MAX. (bar) MAX. PRESSURE (bar)	€
FPMU 1/4	1/4" BSP	12	350	43,93
FPMU 3/8	3/8" BSP	30	350	47,46
FPMU 1/2	1/2" BSP	45	310	54,45
FPMU 3/4	3/4" BSP	85	280	77,40
FPMU 1	1" BSP	150	250	157,79

Estrangulador bidireccional (regulable)

Adjustable bidirectional barrel valve
Étrangleur bidirectionnel réglable
Strozziatore bidirezionale (regolabile)



Referencia Part n°	ROSCA THREAD	CAUDAL MÁX. (l/min) MAX. FLOW (l/min)	PRESIÓN MAX. (bar) MAX. PRESSURE (bar)	€
FPMB 1/4	1/4" BSP	12	350	41,68
FPMB 3/8	3/8" BSP	30	350	43,51
FPMB 1/2	1/2" BSP	45	310	48,70
FPMB 3/4	3/4" BSP	85	280	67,82
FPMB 1	1" BSP	150	250	123,38

VÁLVULAS HIDRÁULICAS

Hydraulic valves
Valves hydrauliques
Valvole idrauliche

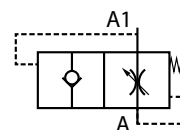
Válvula paracaídas hembra-hembra



Hose break valve (female-female)

Valve parachute femelle-femelle

Valvola paracadute femmina-femmina



Referencia Part n°	ROSCA THREAD	CAUDAL MÁX. (l/min) MAX. FLOW (l/min)	PRESIÓN MÁX. (bar) MAX. PRESSURE (bar)	€
FFP 1/4	1/4" BSP	25	350	25,10
FFP 3/8	3/8" BSP	50	350	25,05
FFP 1/2	1/2" BSP	80	350	32,19
FFP 3/4	3/4" BSP	150	350	43,19
FFP 1	1" BSP	200	300	98,23

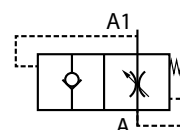
Válvula paracaídas macho-hembra



Hose break valve (male-female)

Valve parachute male-femelle

Valvola paracadute maschio-femmina



Referencia Part n°	ROSCA THREAD	CAUDAL MÁX. (l/min) MAX. FLOW (l/min)	PRESIÓN MÁX. (bar) MAX. PRESSURE (bar)	€
MFP 1/4	1/4" BSP	25	350	25,10
MFP 3/8	3/8" BSP	50	350	25,05
MFP 1/2	1/2" BSP	80	350	31,90
MFP 3/4	3/4" BSP	150	350	43,42
MFP 1	1" BSP	200	300	90,83

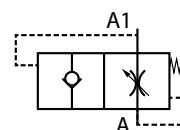
Válvula paracaídas insertable - cierre total



Plug-in hose break valve

Valve parachute insertable- fermeture totale

Valvola paracadute inseribile -chiusura totale



Referencia Part n°	ROSCA THREAD	CAUDAL MÁX. (l/min) MAX. FLOW (l/min)	PRESIÓN MÁX. (bar) MAX. PRESSURE (bar)	€
FPP 1/4	1/4" BSP	25	350	17,08
FPP 3/8	3/8" BSP	50	350	18,56
FPP 1/2	1/2" BSP	80	350	21,58
FPP 3/4	3/4" BSP	150	350	28,93
FPP 1	1" BSP	200	300	61,07

EMISORES RECEPTORES
RADIO REMOTE CONTROL

TrAle®

P. 107

